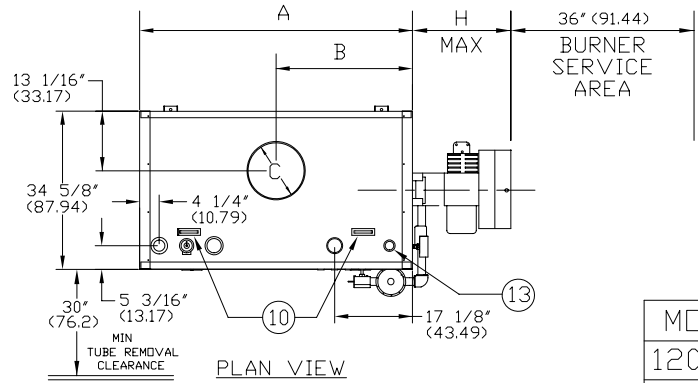


CLM SERIES FORCED DRAFT  
WATER BOILERS (CLM120-CLM300)

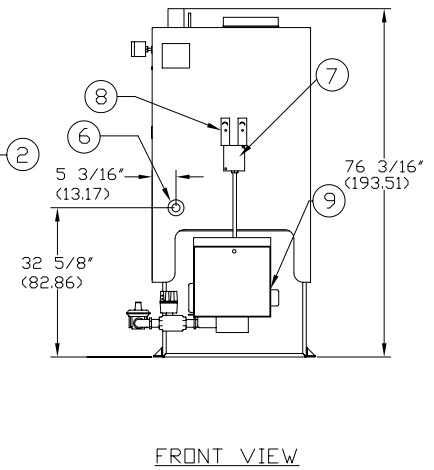
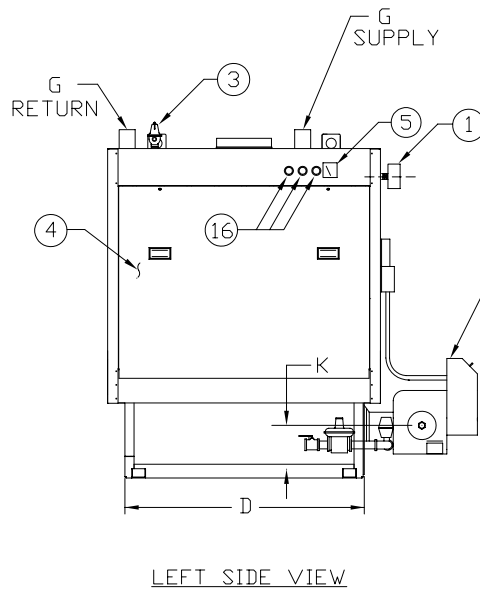
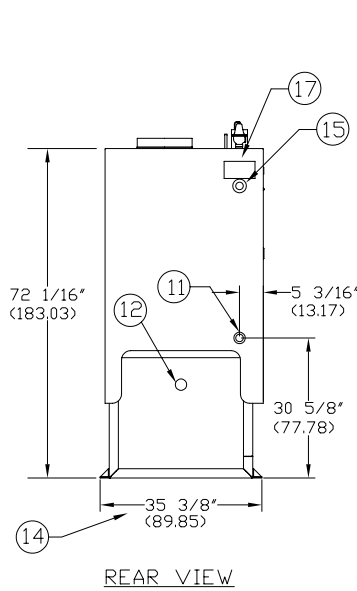
EFFECTIVE DATE: 10/02/08  
REPLACES: 7/22/03

NOTES:

1. ALL DIMENSIONS ARE IN INCHES. THOSE IN PARENTHESES ARE CENTIMETERS.
2. LOCATION DIMENSIONS ARE ALL  $\pm 1/2"$ .
3. GAS TRAIN, CONTROL AND BURNER CONFIGURATION WILL VARY DEPENDING ON JOB SPECIFICATIONS & CONDITIONS.
4. DIMENSIONS ARE SUBJECT TO CHANGE WITHOUT NOTICE. CONSULT FACTORY FOR CERTIFIED DIMENSIONS.



MODEL	K
120-240	12"
270-300	15"



1. PROBE TYPE L.W.C.O.	6. CLNDUT./INSP. OPNG-1 1/2"NPT	11. DRAIN CONNECTION	16. CONTROL CONNECTIONS
2. FORCED DRAFT BURNER	7. ELEC. ENCLOSURE	12. FLAME OBSERVATION PORT	17. ASME NAME PLATE
3. RELIEF VALVE	8. AQUASTATS	13. 1" (2.54) EXP TANK CONN	
4. TUBE ACCESS PANEL	9. OIL PUMP LOCATION	14. WIDTH OVER MTG BASE	
5. PRESS/TEMP. GAUGE	10. LIFTING LUG	15. CLNDUT./INSP. OPNG-1 1/4"NPT	

BOILER MODEL	CLM120	CLM150	CLM180	CLM210	CLM240	CLM270	CLM300
A-LENGTH OVER JACKET	50 11/16" (128.74)	59 11/16" (151.60)	69 1/8" (175.57)	78 3/8" (199.07)	88" (223.52)	97" (246.38)	106 5/8" (270.82)
B-FLUE LOCATION	25 5/16" (64.29)	29 13/16" (75.72)	34 9/16" (87.78)	39 3/16" (99.53)	44" (111.76)	48 1/2" (123.19)	53 5/16" (135.41)
C-FLUE DIAMETER	10" (25.40)	12" (30.48)	14" (35.56)	14" (35.56)	16" (40.64)	16" (40.64)	16" (40.64)
D-LENGTH OVER BASE	43 1/8" (109.53)	52 3/8" (133.03)	61 5/8" (156.52)	70 7/8" (180.02)	80 1/8" (203.51)	89 7/16" (219.54)	99 1/16" (251.61)
G-SUPPLY/ RETURN NOZZLE SIZE	3" (7.62)	3" (7.62)	3" (7.62)	3" (7.62)	3" (7.62)	3" (7.62)	3" (7.62)

H-BURNER EXTENSION CONSULT FACTORY FOR BURNER EXTENSION APPLICATIONS



BRYAN BOILERS

783 NORTH CHILI AVE  
PERU, INDIANA 46970

ORDER NO.:	
ORDER REV. NO.:	
FORM NO.:	2133

# CLM SERIES FORCED DRAFT WATER BOILER

BOILER MODEL		CLM120	CLM150	CLM180	CLM210	CLM240	CLM270	CLM300
INPUT	MBH	1,200	1,500	1,800	2,100	2,400	2,700	3,000
	(KW)	351.6	439.5	527.4	615.3	703.2	791.1	879.0
OUTPUT*	MBH	978	1,223	1,467	1,712	1,956	2,201	2,445
	(KW)	286.6	358.2	429.8	501.5	573.1	644.7	716.4
BOILER HORSEPOWER*	HP	29	37	44	51	58	66	73
	(KW)	286	358	429	501	573	644	716
TUBE DIAMETER	INCHES	1.00	1.00	1.00	1.00	1.00	1.00	1.00
	(CM)	2.54	2.54	2.54	2.54	2.54	2.54	2.54
NUMBER OF TUBES		36	45	54	63	72	81	90
PRESSURE VESSEL								
VOLUME	GAL	38	47	55	63	71	80	88
	(L)	143.8	177.9	208.2	238.5	268.7	302.8	333.1
HEATING SURFACE	SQ FT	145	180	215	251	287	322	360
	(SQ M)	13.5	16.7	20.0	23.3	26.7	29.9	33.5
OPERATING WEIGHT	LBS	3,000	3,510	4,025	4,535	5,050	6,010	6,150
	(KG)	1,360.8	1,592.1	1,825.7	2,057.1	2,290.7	2,726.1	2,789.6
SHIPPING WEIGHT	LBS	2,250	2,675	2,975	3,475	3,900	4,400	4,800
	(KG)	1,020.6	1,213.4	1,349.5	1,576.3	1,769.0	1,995.8	2,177.3

\* Output and Boiler HP based on an average natural gas combustion efficiency.