



HURST

BOILER & WELDING CO., INC

BLOWDOWN SEPARATOR

BDS SERIES

Safely Separates
Steam Vapor from Boiler Blow-Off Water



The HBC Blowdown Separator is designed to take water from the boiler during blowdown and reduce it to atmospheric pressure for disposal. The HBC Separator accomplishes this by separating the subsequent flashed steam from the hot water. As the blowdown enters the vessel, it is forced into a centrifugal pattern by means of a striking plate. The steam is vented to the atmosphere through a top connection. The HBC Separator is built as per requirements Section VIII of the ASME Code and stamped by the National Board of Pressure Vessel Inspectors. The Hurst Blowdown Separator provides an economical means of safe boiler blowdown.

The separator includes a structural steel support stand for mounting to foundation. Options available are after cooler, manual cooling valve assembly, automatic cooling valve assembly, and exhaust heads.



Optional
Aftercooler

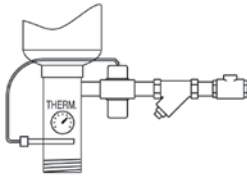
HURST PERFORMANCE SERIES BOILERS

HURST PERFORMANCE SERIES BOILERS

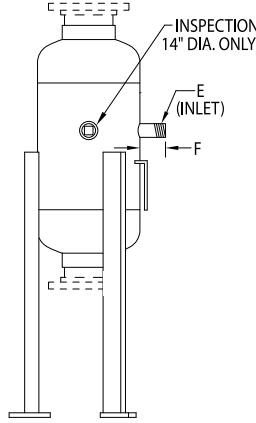
HURST BLOWDOWN SEPARATORS are built to Section VIII, Division 1 of the ASME Code for 250 PSI design pressure.

(200 PSI design pressure with 150# ANSI flanges).

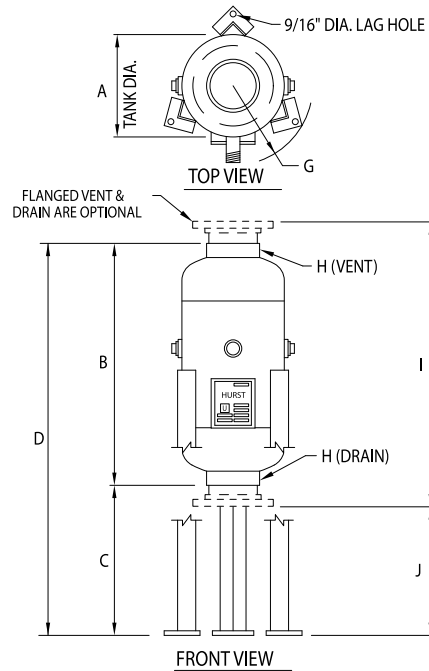
Blowdown separator design pressure should be a minimum of 25% of the boiler maximum allowable working pressure (MAWP) as recommended by the National Board.



OPTIONAL AFTER-COOLER



LEFT SIDE VIEW



SPECIFICATIONS

All Dimensions are in Inches

THREADED VENT & DRAIN STANDARD, FLANGED ARE OPTIONAL

SPECIFICATIONS				
DIMENSION	3/4"-1 1/4" ECONOMY	1 1/4" BLOWDOWN	1 1/2"-2" BLOWDOWN	2"-2 1/2" BLOWDOWN
MODEL NUMBER	BDS8 <small>SEE NOTE 1</small>	BD14X34	BD14X34-A	BD14X56
A TANK DIAMETER	8	14	14	14
B LENGTH	26	34 3/4	32 3/4	54 1/4
C DRAIN TO GROUND	16	23	24	24
D OVERALL HEIGHT	42	57 3/4	56 3/4	80
E INLET SIZE	1 1/4	1 1/4"	2"	2 1/2
F INLET LENGTH	3	4 1/2	3 1/2	3 1/2
G OVERALL RAD.	7 1/2	10 7/8	10 7/8	10 7/8
H VENT & DRAIN	2 1/2	3	4	6
I LENGTH W/FLG.	32 1/2	40 3/4	38 3/4	60 1/4
J FLANGE TO GROUND	13	20	21	21
WEIGHT NET/SHIPPING LBS.	80/100	227/257	225/255	355/395

NOTE 1: 8" DIAMETER SEPARATORS ARE DESIGNED FOR BOILERS NEEDING SHORT DURATION BLOWDOWN ONLY, SUCH AS VERTICAL TUBELESS BOILERS
DIMENSIONS SUBJECT TO CHANGE WITHOUT NOTICE, CERTIFIED DRAWINGS AVAILABLE ON REQUEST
ALL DIMENSIONS ARE IN INCHES



Inspected and registered with the National Board of Boiler & Pressure Vessel Inspectors.



Designed, constructed and stamped in accordance with the requirements of the ASME Boiler Codes.

HBC-09518
10/2012



 hurstboiler.com

HURST BOILER & WELDING CO., INC.

100 Boilermaker Lane • Coolidge, GA 31738-0530

Tel: (229) 346-3545 • Fax: (229) 346-3874

email: info@hurstboiler.com