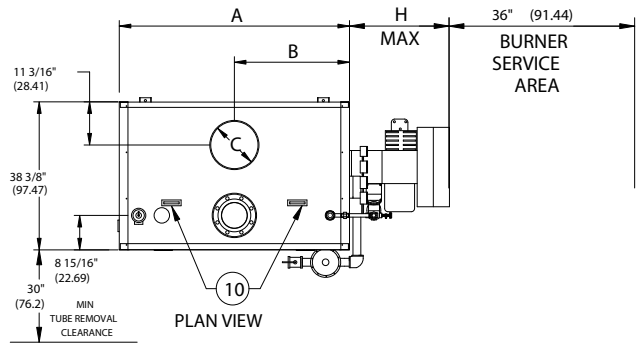


CLM SERIES FORCED DRAFT 15# & 150#
STEAM BOILERS (CLM120-CLM300)

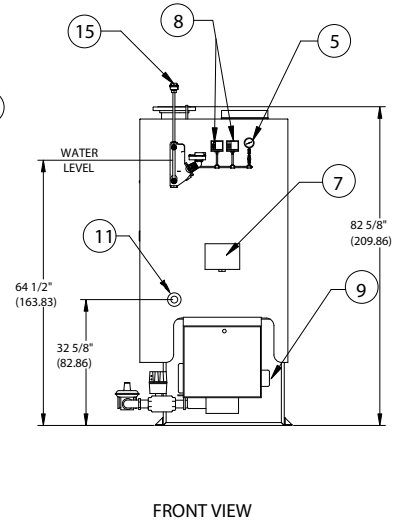
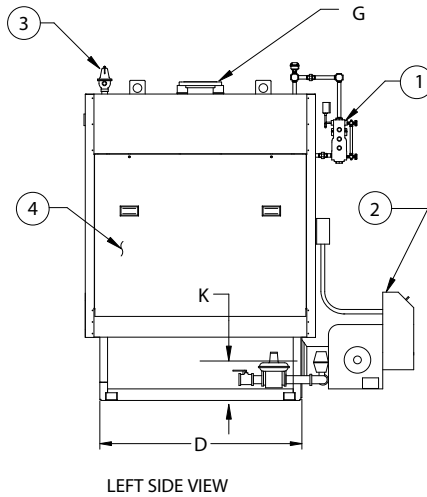
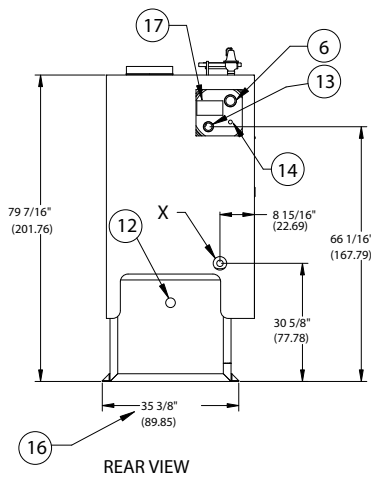
EFFECTIVE DATE: 9/16/03
REPLACES: 7/22/03

NOTES:

- ALL DIMENSIONS ARE IN INCHES. THOSE IN PARENTHESES ARE CENTIMETERS.
- LOCATION DIMENSIONS ARE ALL $\pm 1/2"$.
- GAS TRAIN, CONTROL AND BURNER CONFIGURATION WILL VARY DEPENDING ON JOB SPECIFICATIONS & CONDITIONS.
- DIMENSIONS ARE SUBJECT TO CHANGE WITHOUT NOTICE. CONSULT FACTORY FOR CERTIFIED DIMENSIONS.
- ALL FLANGES ARE 150# DESIGN UNLESS NOTED.



| MODEL | K |
|---------|-----|
| 120-240 | 12" |
| 270-300 | 15" |



| | | | |
|------------------------|-----------------------------------|--|-------------------------|
| 1. FLOAT TYPE L.W.C.O. | 6. CLNOUT./INSP. OPNG-2"NPT(5.08) | 11. CLNOUT./INSP OPNG-1 1/2" (3.81) | 16. WIDTH OVER MTG LUGS |
| 2. FORCED DRAFT BURNER | 7. ELEC. ENCLOSURE | 12. FLAME OBSERVATION PORT | 17. ASME NAME PLATE |
| 3. RELIEF VALVE | 8. PRESSURETROLS | 13. 1" NPT (2.54) SURFACE BLOWOFF CONNECTION | |
| 4. TUBE ACCESS PANEL | 9. OIL PUMP LOCATION | 14. 1 1/2" (3.81) FEED CONNECTION | |
| 5. PRESSURE GAUGE | 10. MOUNTING LUG | 15. PROBE TYPE AUX L.W.C.O | |

| BOILER MODEL | | CLM120 | CLM150 | CLM180 | CLM210 | CLM240 | CLM270 | CLM300 |
|-------------------------------|---------|-----------------------|-----------------------|---------------------|---------------------|---------------------|----------------------|----------------------|
| A-LENGTH OVER JACKET | | 50 11/16" (128.74) | 59 11/16" (151.60) | 69 1/8" (175.57) | 78 3/8" (199.07) | 88" (223.52) | 97" (246.38) | 106 5/8" (270.82) |
| B-FLUE LOCATION | | 25 11/32" (64.37) | 29 27/32" (75.80) | 34 9/16" (87.78) | 39 3/16" (99.53) | 44" (111.76) | 48 1/2" (123.19) | 53 5/16" (135.41) |
| C-FLUE DIAMETER | | 10" (25.40) | 12" (30.48) | 14" (35.56) | 14" (35.56) | 16" (40.64) | 16" (40.64) | 16" (40.64) |
| D-LENGTH OVER BASE | | 43 1/8" (109.53) | 52 3/8" (133.03) | 61 5/8" (156.52) | 70 7/8" (180.02) | 80 1/8" (203.51) | 89 7/16" (227.16) | 99 1/16" (251.61) |
| G-SUPPLY NOZZLE SEE NOTE 5 | 15 PSI | 6" FLG (15.24) | 6" FLG (15.24) | 6" FLG (15.24) | 6" FLG (15.24) | 6" FLG (15.24) | 6" FLG (15.24) | 6" FLG (15.24) |
| | 150 PSI | 3" NPT (7.62) | 3" NPT (7.62) | 3" NPT (7.62) | 3" NPT (7.62) | 3" NPT (7.62) | 3" NPT (7.62) | 3" NPT (7.62) |
| X-BLOWDOWN CONNECTION | 15 PSI | 1 1/4" (3.18) | 1 1/4" (3.18) | 1 1/4" (3.18) | 1 1/2" (3.81) | 1 1/2" (3.81) | 1 1/2" (3.81) | 1 1/2" (3.81) |
| | 150 PSI | 1" (2.54) | 1" (2.54) | 1" (2.54) | 1" (2.54) | 1" (2.54) | 1" (2.54) | 1" (2.54) |

H- BURNER EXTENSION CONSULT FACTORY FOR BURNER EXTENSION APPLICATIONS



BRYAN BOILERS

783 NORTH CHILI AVE
PERU, INDIANA 46970

| | |
|-----------------|------|
| ORDER NO.: | |
| ORDER REV. NO.: | |
| FORM NO.: | 2134 |

CLM SERIES FORCED DRAFT STEAM BOILERS

| BOILER MODEL | | CLM120 | CLM150 | CLM180 | CLM210 | CLM240 | CLM270 | CLM300 |
|---|---------|-------------|-------------|-------------|-------------|-------------|-------------|-------------|
| INPUT | MBH | 1,200 | 1,500 | 1,800 | 2,100 | 2,400 | 2,700 | 3,000 |
| | (KW) | 351.6 | 439.5 | 527.4 | 615.3 | 703.2 | 791.1 | 879.0 |
| OUTPUT* | MBH | 960 | 1,200 | 1,440 | 1,680 | 1,920 | 2,160 | 2,400 |
| | (KW) | 281.3 | 351.6 | 421.9 | 492.2 | 562.6 | 632.9 | 703.2 |
| BOILER HORSEPOWER | HP | 29 | 36 | 43 | 50 | 57 | 64 | 72 |
| | (KW) | 284 | 353 | 421 | 490 | 559 | 627 | 706 |
| TUBE DIAMETER | INCHES | 1.00 | 1.00 | 1.00 | 1.00 | 1.00 | 1.00 | 1.00 |
| | (CM) | 2.54 | 2.54 | 2.54 | 2.54 | 2.54 | 2.54 | 2.54 |
| NUMBER OF TUBES | | 36 | 45 | 54 | 63 | 72 | 81 | 90 |
| PRESSURE VESSEL | | | | | | | | |
| VOLUME | GAL | 66 | 79 | 93 | 106 | 120 | 133 | 147 |
| | (L) | 249.8 | 299.0 | 352.0 | 401.2 | 454.2 | 503.4 | 556.4 |
| HEATING SURFACE | SQ FT | 145 | 180 | 215 | 251 | 287 | 322 | 360 |
| | (SQ M) | 13.5 | 16.7 | 20.0 | 23.3 | 26.7 | 29.9 | 33.5 |
| STEAM OUTPUT* | LBS/HR | 990 | 1,237 | 1,485 | 1,732 | 1,979 | 2,227 | 2,474 |
| | (KG/HR) | 449.1 | 561.1 | 673.6 | 785.6 | 897.7 | 1,010.2 | 1,122.2 |
| OPERATING WEIGHT | LBS | 3,000 | 3,510 | 4,025 | 4,535 | 5,050 | 6,010 | 6,150 |
| | (KG) | 1,360.8 | 1,592.1 | 1,825.7 | 2,057.1 | 2,290.7 | 2,726.1 | 2,789.6 |
| SHIPPING WEIGHT | LBS | 2,450 | 2,850 | 3,250 | 3,650 | 4,050 | 4,900 | 4,925 |
| | (KG) | 1,111.3 | 1,292.8 | 1,474.2 | 1,655.6 | 1,837.1 | 2,222.6 | 2,234.0 |
| RELIEF VALVE TYPICAL - 15 PSIG (103.4 KPA) | | | | | | | | |
| QUANTITY | | (1) 13-214 | (1) 13-214 | (1) 13-214 | (2) 13-214 | (2) 13-214 | (2) 13-214 | (2) 13-214 |
| SIZE | INCHES | 1½ x 2 | 1½ x 2 | 1½ x 2 | 1½ x 2 | 1½ x 2 | 1½ x 2 | 1½ x 2 |
| | (CM) | 3.81 x 5.08 | 3.81 x 5.08 | 3.81 x 5.09 | 3.81 x 5.08 | 3.81 x 5.09 | 3.81 x 5.08 | 3.81 x 5.09 |
| CAPACITY-TOTAL | MBH | 1,900 | 1,900 | 1,900 | 3,800 | 3,800 | 3,800 | 3,800 |
| | (KW) | 556.7 | 556.7 | 556.7 | 1,113.4 | 1,113.4 | 1,113.4 | 1,113.4 |
| RELIEF VALVE TYPICAL - 150 PSIG (1,034.2 KPA) | | | | | | | | |
| QUANTITY | | (1) 6021ED | (1) 6021ED | (1) 6021ED | (1) 6021FE | (1) 6021FE | (1) 6021FE | (1) 6021FE |
| SIZE | INCHES | 3/4 x 1 | 3/4 x 1 | 3/4 x 1 | 1 x 1¼ | 1 x 1¼ | 1 x 1¼ | 1 x 1¼ |
| | (CM) | 1.90 x 2.54 | 1.90 x 2.54 | 1.90 x 2.55 | 2.54 x 3.17 | 2.54 x 3.18 | 2.54 x 3.17 | 2.54 x 3.18 |
| CAPACITY-TOTAL | MBH | 1,651 | 1,651 | 1,651 | 2,583 | 2,583 | 2,583 | 2,583 |
| | (KW) | 483.7 | 483.7 | 483.7 | 756.8 | 756.8 | 756.8 | 756.8 |

* Output based on nominal 80% of input. Actual combustion efficiencies will vary and are fuel dependant.