

# Schebler

CHIMNEY SYSTEMS



*Taking value to  
the highest levels*

*Even the sky  
is no limit.*

**Schebler Chimney Systems is a premier source of custom, modular prefabricated chimneys, grease ducts, boiler flues, generator exhaust, breeching and heavy-wall engineered stacks.**

With advanced **design and engineering support**, we provide complete system design from sizing and pressure drop calculations to product selection and detailed CAD design, turning down pressure on busy engineering staffs.

Perhaps most importantly, we offer the industry's **only guaranteed two-week delivery** – bringing time, cost and satisfaction value to projects from Yankee Stadium to Harvard University to McDonald's Corporation ... to yours.



# A new dimension in space & time.

The Schebler **eVent™** prefabricated chimney series represents a selection of new solutions for high-efficiency, condensing boilers – with inner liners constructed of **AL 29-4C® stainless steel** for outstanding corrosion resistance and extension of the appliance's useful life.

UL 1738-listed, each eVent model is available in odd and even diameters from 5" to 48" – the industry's largest. Larger diameters mean **fewer** stacks to vent multiple boilers, saving considerable cost and space. The fast, easy and proven inner band "V" joint connection creates a leak-free joint with the industry's highest pressure rating.



Choose from three Schebler-only models:

**eVent™** - lightweight (24-gauge inner liner), affordable, continuous-weld, double-wall system with 1" air gap.

**eVentPLUS™** - constructed of thicker-than-industry-standard material (20-gauge) for structural integrity and extended boiler life.

**eVentPLUS2™** - adds 2" of insulation to further diminish condensation and protect from freezing. Enables tight installations by reducing clearance to combustibles.

# **Right on schedule... and easily**

Schebler chimney systems are known by the value provided to engineers, contractors and end users. The integrity that goes into them translates into qualities our customers can take to the bank.

Here are some important reasons these **factory-welded, fire-rated, UL-listed chimneys** are at work in New York City, Chicago, Florida ... even Alaska.



## **Save downtime** – Fast project completion

- No on-site welding
- 2-week product lead-time (vs. industry standard 3-6 weeks)
- Detailed CAD drawings, draft calculations, design consultation

## **Save money** – Lowered installation costs

- Unequaled product support limits
- Industry's only 71" straight sections
- Detailed instructions for trouble-free installation

## **Save rework** – Fewer callbacks

- Unmatched dimensional accuracy
- No water leakage; no hot spots



# *installed.*

**Our concept:** Each model differs in the amount of space and insulation used between shell and liner, which determines inner and outer temperatures and clearance to combustibles:

**Model PA** (pipe, air gap) – the industry’s highest quality general-purpose, double-wall vent, ideal for most boiler vent applications.

**Model P1** (pipe, 1” insulation) – reduces installation costs, increases efficiency with industry’s fewest joint connections.

**Model P2** (pipe, 2” insulation) – increases usable square footage with industry’s lowest clearance to combustibles, starting at 1/2”. Reduces building cooling load, mechanical room temps and potential for injury.

**Model P2A** (pipe, 2” insulation, air gap) – a Schebler exclusive that performs with similar results to a 4” insulated product, with lower cost/space requirements.

**Model P4** (pipe, 4” insulation) – the premier heat loss reducer, and the clear choice for generator exhaust applications.

**Model SW** (single wall) – cost-effective method for relining masonry stacks, as a chimney connector, dishwasher exhaust or for venting fume and laboratory hoods.



# Space and safety first.

**SlimVent™** (obround grease duct) The revolutionary flat oval shape saves overhead clearance space - 28% compared to round designs. Now UL 2221 Classified, this patented product offers important safety advantages including stainless steel double wall construction and 2-hour fire rating.

**FyreGuard™** (grease duct) These important advantages for food service fire safety include 4" insulation, zero-clearance to combustibles and 2-hour fire rating. This eliminates any need for a fire-rated chase. UL 2221 Classified.

As with all Schebler prefabricated models, these exhaust innovations are available for shipping within two weeks, considerably faster than the industry standard. Product gets to your job site quicker and eliminates costly work stoppages.



**Engineered Stacks**

# For your high-profile projects.

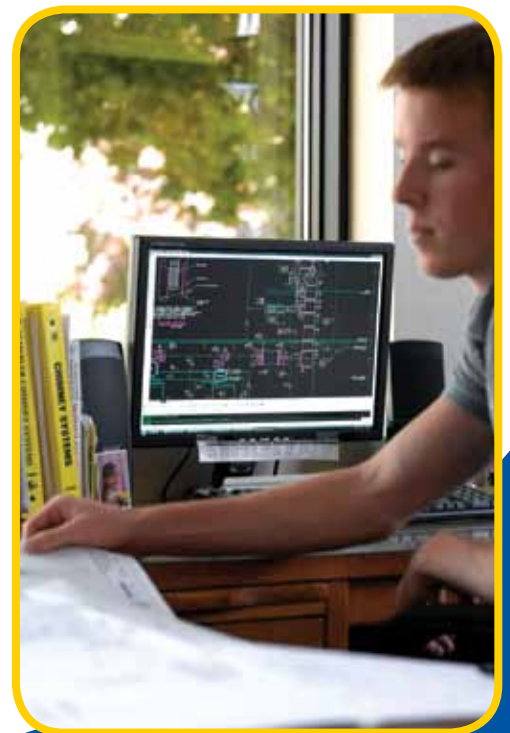
Count on our long experience working with design/build firms, mechanical engineers and contractors to turn ideas and plans into successfully completed commercial and industrial chimney projects.

With diameters up to 18 feet and utilization of various materials, we can and do handle the big jobs. Free-standing or secured, one-piece or sectional, you'll have the assurance of our high wind and seismic ratings.

Look to us to take boiler flue details off your hands with expert engineering support, CAD drawings, sizing and design calculations. And, if desired, we handle projects from start to finish – including design, engineering, fabrication and even installation work.

It's good to have friends in high places.

**specSchebler**



# Look inside ...

**Then look up** – you'll see our work on skylines as well as in the inner workings of business and industry. Schebler builds value with prefabricated chimneys, engineered stacks and design/engineering services. We proudly partner with corporate, industrial, government, hospitality and institutional customers including these:

**Yankee Stadium**

**Giants Stadium**

**Wrigley Field**

**Trump Tower/Chicago**

**McCormick Place**

**Rockefeller Center**

**Disney Corporation**

**Caesar's Palace**

**US Treasury Department**

**FBI**

**General Electric**

**John Deere & Co.**

**Harvard University**

**Columbia University**

**University of Chicago**

**St. Jude's Hospital**

**Cook County Hospital**

**AT&T**

**Microsoft**

**Chipotle Grill**

**Publix Supermarkets**

**McDonald's Corp**

**Los Alamos Labs**

**Underwriters Lab**

**... and many more**

**Contact us today for more information. We welcome inquiries regarding our chimney products, applications or solutions for your one-of-a-kind situation.**

**It's what we're here for and we look forward to responding.**



*Taking value to  
the highest levels*

**P 800.391.0009 • 563.359.0110 • F 563.359.8430  
5665 FENNO RD • BETTENDORF, IOWA 52722  
WWW.SCHEBLERGHIMNEY.COM**